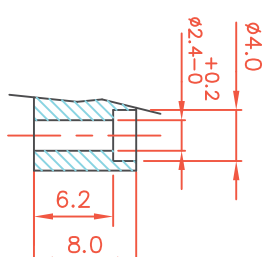
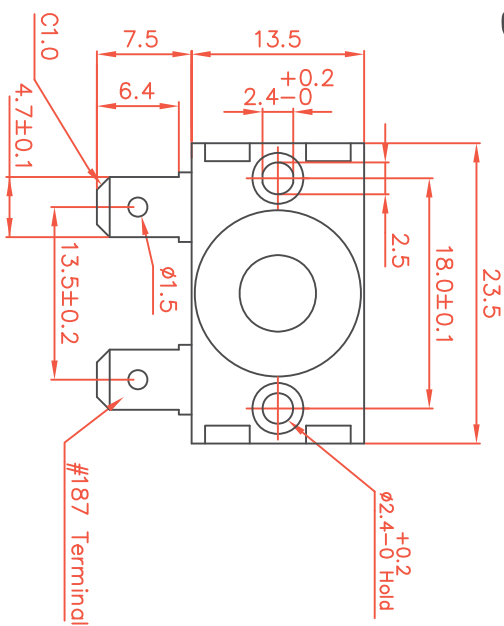
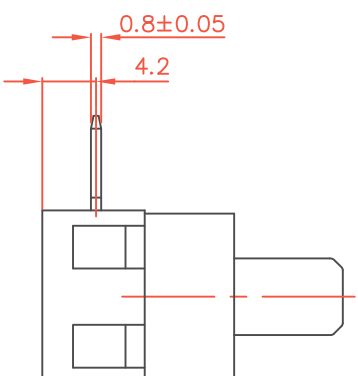
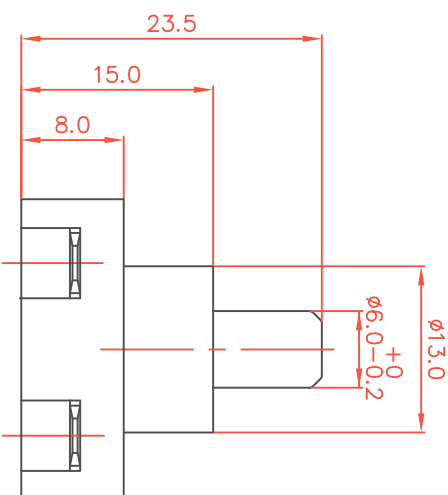


Dimensions drawing



HOLE TYPE



Tolerance	
X.X	± 0.2
XX.X	± 0.4

VIEW		SIZE	A4	UNIT	
DATE	DEC.16.2008	VER	1.4	FILE NAME	SP8-D
APPROVAL	余映德	CONFIRM	王永輝	DESIGN	倪有庭



APPROVED DATA SHEET

Model: 1000350009(P8-10S-0D-Z)
=====

ISSUED DATE: JUN.11.2012
APPROVED NO.: 1000350009.D
PAGE: 1/2

The undersigned guarantee of the model switches is meets the following specifications.

1.Operation Characteristics

Operating Force (OF) : Max. 860 gf
Full-travel : 4.0±0.5 mm

2. Specifications

Initial Contact Resistance : Max. 50 mΩ .
(Measured by ohm meter –Open Voltage<1VDC, Driver current -100mA)
Before measure the switch contact resistance, please press the switch three times on and off.

Initial Dielectric Strength : 1000VAC(50-60HZ)/minute between contacts.
3,000VAC(50-60HZ)/minute between Live-parts and dead metal parts.

Insulation Resistance : Min. 100 MΩ (500 VDC/ minute) between Live-parts and dead metal parts.

Circuit Arrangement : SPST (Single pole single throw)

Rating : 10A 125VAC; 6A 250VAC, 7(4)A 250VAC

Service Life : Min. 10,000 operations

Rating Load : 10A 125VAC; 6A 250VAC on Resistive Load.
7(4)A 250VAC on Resistive and Motor Load.

Operating Frequency : 10~30 operations per minute.

Safety Certificate : UL, ENEC14

Mechanical Service Life : Min. 50,000 operations.

Operating Frequency : Max. 30 operations per minute.



1F, NO.799, CHUNG CHENG ROAD,
CHUNG HO DIST., NEW TAIPEI CITY
TAIWAN, R.O.C

TEL: 886-2-2226-8001
FAX: 886-2-2226-8002 / 886-2226-8170
[Http://www.sweeta.com.tw](http://www.sweeta.com.tw)

APPROVED DATA SHEET

Model: 1000350009(P8-10S-0D-Z)
=====

ISSUED DATE: JUN.11.2012
APPROVED NO.: 1000350009.D
PAGE: 2/2

3. Environments

Operating Temperature	:	-40°C ~ 85°C (with no icing)
Vibration Resistance	:	10~55Hz, displacement 0.75mm(p-p)
Shock Resistance	:	Destruction: 1,000 m/s ² {approx. 100G} max. Malfunction: 300 m/s ² {approx. 30G} max.
Soldering by hand	:	260°C maximum within 5 seconds. 300°C maximum within 3 seconds.

SWEETA PRODUCTS CORP.

簡素玲

PREPARED

張桐榮

CHECKED

倪有庭

APPROVED