

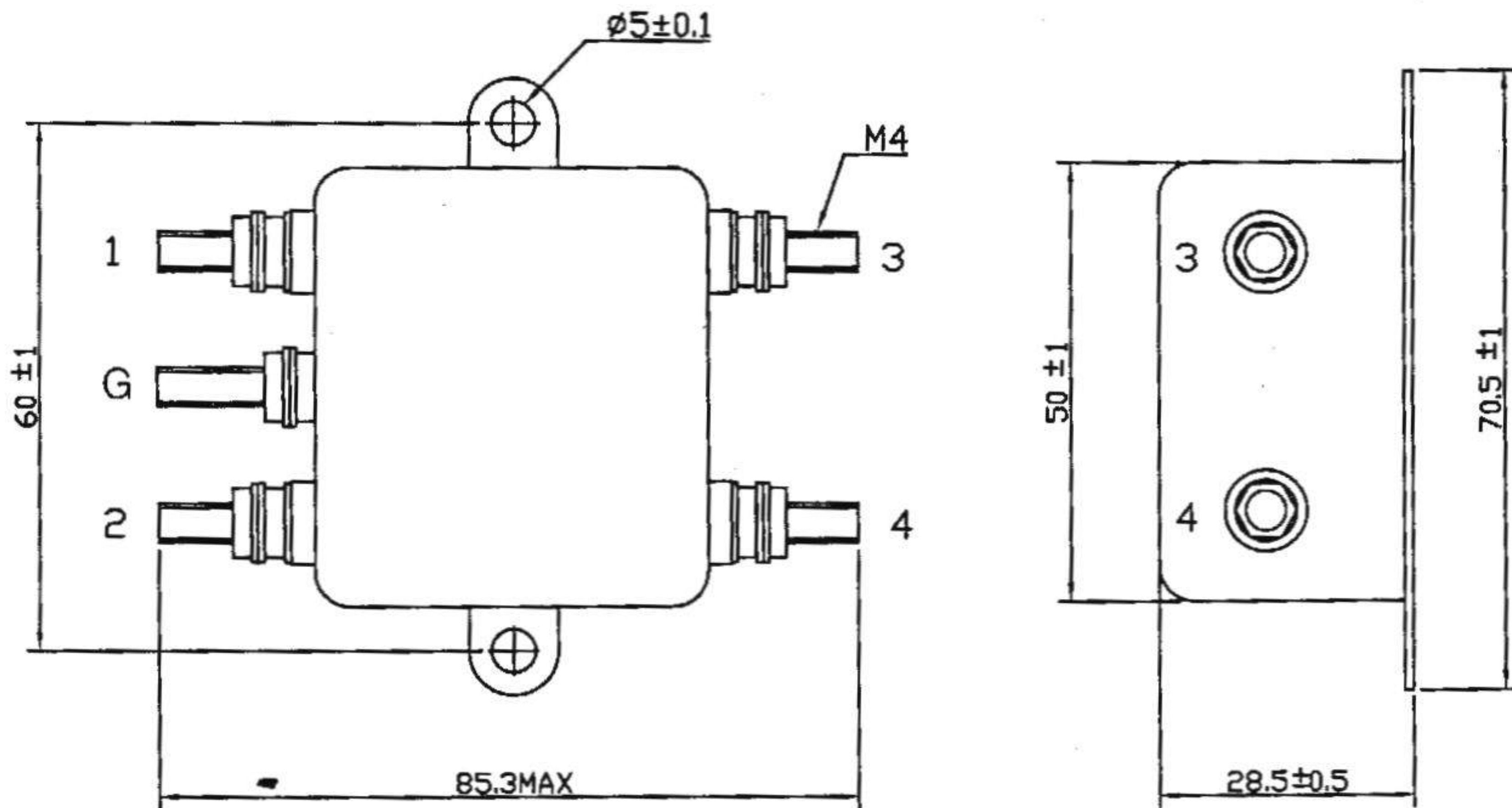
SPECIFICATION FOR APPROVAL

TO:

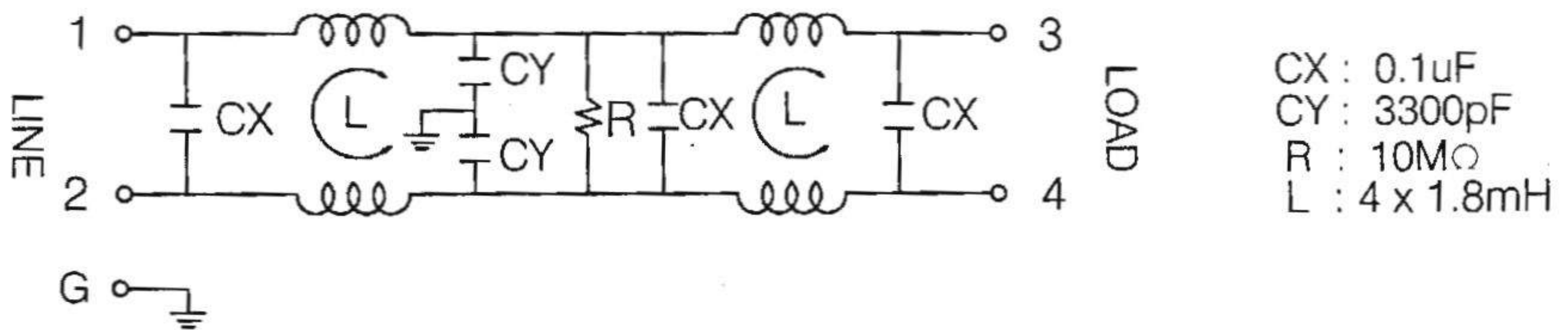
2/1


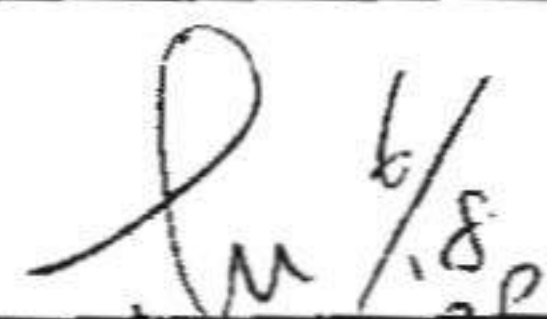
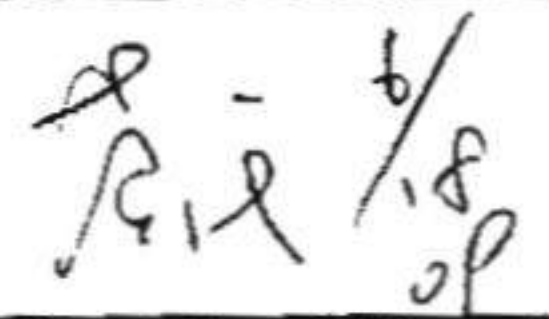
PART NAME	EMI FILTER	SAMPLE NO	
MODEL	SEYD03T4L2	SAMPLE DATE	JUN.18.2009
USED NO		OUR DRAWING NO	YDR-00186b

1. PHYSICAL DIMENSIONS:(mm)



2. SCHEMATIC:



REPORTED BY	CHECKED BY	APPROVED BY	3	
			2	增CE安規
			REV. 1	更新安規號碼

SPECIFICATION FOR APPROVAL

TO:

2/2




PART NAME	EMI FILTER	SAMPLE NO	
MODEL	SEYD03T4L2	SAMPLE DATE	JUN.18.2009
USED NO		OUR DRAWING NO	YDR-00186b

3. ELECTRICAL CHARACTERISTICS:

3-1. RATED VOLTAGE 125/250VAC
 3-2. RATED CURRENT 3 A
 3-3. OPERATING FREQUENCY 50/60Hz
 3-4. LEAK CURRENT: EACH LINE TO GROUND
 250VAC 50Hz 0.8mA MAX
 3-5. HIPOT RATING: (FOR ONE MINUTE)
 LINE TO LINE 1450VDC
 LINE TO GROUND 1800VAC
 3-6. INSULATION RESISTANCE 250VDC/100MOHM MIN
 3-7. DIRECT CURRENT RESISTANCE 0.3 OHM MAX
 3-8. OPERATING TEMPERATURE -25 TO +85°C

4. SAFETY COMPLIANCE:

△ 1	UL FILE NO: E134751
△ 2	CSA FILE NO: LR95210
	VDE FILE NO: 40008205
	CE

REPORTED BY	CHECKED BY	APPROVED BY	3	
			2	
			REV. 1	