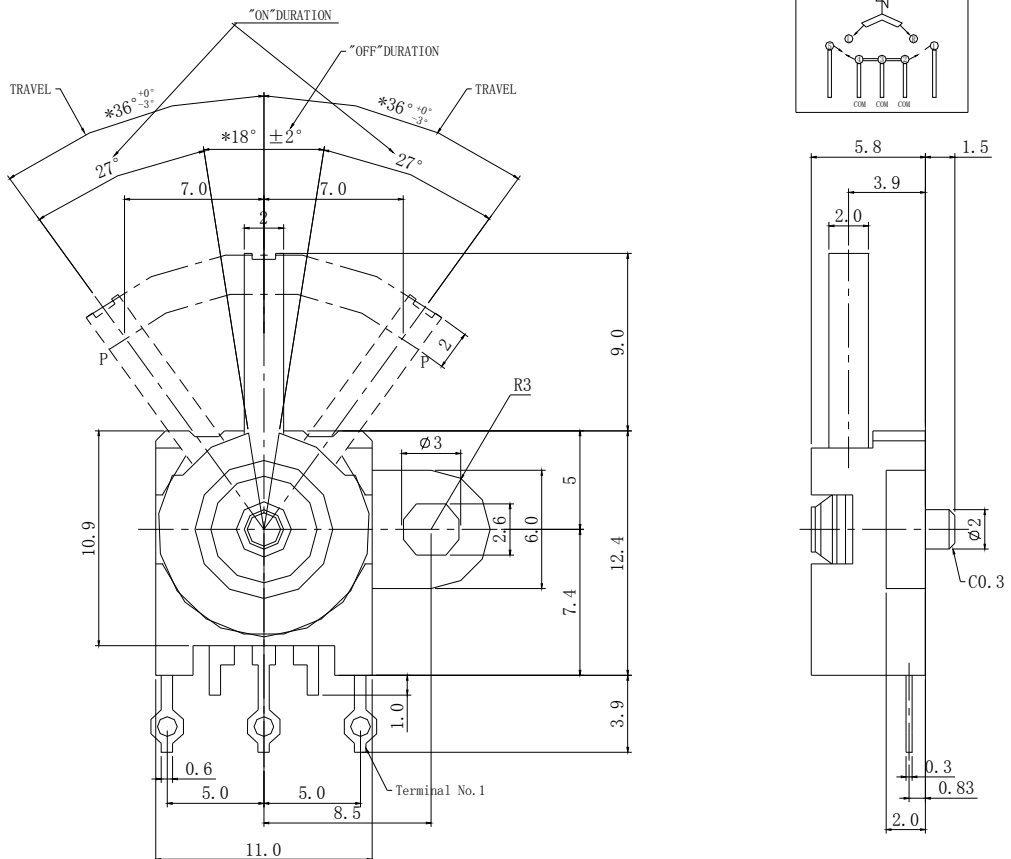


SWEETA PRODUCTS CORPORATION

SWITCH TYPE	SENSOR SWITCHES	MODEL NO.	SRM019-N2-35
<b>1. Functional spec.</b>			
1.1 Rated Voltage	DC 12V	1.6 Free Position	
1.2 Rated Current	0.1A	1.7 Operating Position	
1.3 Contact Resistance	$\leq 100\text{m}\Omega$ (initial value)	1.8 Total Travel Position	
1.4 Operating Force	35gf Max	1.9 Bounce Time	
1.5 Return Force		1.10	
<b>2. Reliable Rating</b>			
2.1 Mechanical Life	50,000 CYCLES	2.5 Soldering Process	$245 \pm 5^\circ\text{C}$ 3 Sec.
2.2 Electrical Life	50,000 CYCLES	2.6 Shipping Temper	$-25^\circ\text{C} \sim 80^\circ\text{C}$
2.3 Insulation Resistance	$\geq 100\text{M}\Omega$ DC250V	2.7 Ambient Humidity Used	$< 85\% \text{RH}$
2.4 Withstand Voltage	AC250V 1minute	2.8	

**3. Dimension Drawing**



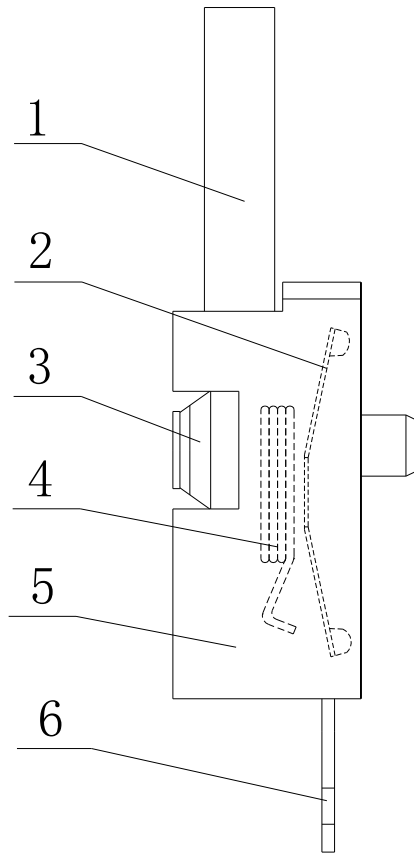
Revision	Description	Date	Revisor
Drawing No.		C/O	Tolerance $\pm 0.2$
Drawing Model.	SPECIFICATION OF STANDARD TYPE	Unit	mm
Prepared	Sany. Zhong	Reviewed	Sunrise. Qin
Approved	Kingsel. Wu	Effective date	20090311

# 喜威達企業股份有限公司

## SWEETA PRODUCTS CORPORATION

SERIES		SENSOR SWITCHES(SRM019)		Issuance date		20060801	
Document No.		DIC/PE019-001		Edition	C	Page	Page 1 of 3
NO.	Part Name	Q'TY	Generic Class	SGS report No.			
1	Stem	1	POM	See SGS report			
2	Spring Plate	1	C5210	See SGS report			
3	Buckle	1	SUS301	See SGS report			
4	Spring	1	SUS304	See SGS report			
5	Base	1	PBT	See SGS report			
6	Terminal	5	C2680	See SGS report			

Structure chart:



# 喜威達企業股份有限公司

## SWEETA PRODUCTS CORPORATION

SERIES		SENSOR SWITCHES(SRM019)		Issuance date		20060801	
Document No.		DIC/PE019-001		Edition		Page	
				C		Page 2 of 3	
1、General							
1.1 Switch rating:		DC12V ,0.1A					
1.2 Operating temperature range		-25℃~80℃					
1.3 Preservative temperature range		-30℃~80℃					
1.4 Storage humidity range		<85% RH					
2.Performance							
2.1 Electrical characteristics							
Items		Test conditions				Criteria	
2.1.1	Contact resistance	Measured by the Contact Resistance Apparatus or m Ω meter at 0.1A DC5V. The result is the average of 5 successive measurements.				Refer to individual product drawing	
2.1.2	Insulation resistance	Spec. voltage (Refer to the 2.3 item of spec. drawing) is applied between each pair of terminals and between the terminal and the metal frame for 60±5s.				Refer to individual product drawing	
2.1.3	Dielectric withstand in voltage	Spec. voltage (Refer to the 2.4 item of spec. drawing)is applied between each pair of terminals and between the terminal and the metal frame for 60±5s.				There shall be no breakdown	
3.Mechanical characteristics							
3.1	rotational angle					a =36° ±3° a =36° ±3°	
3.2	Operating feeling					Sensitive snap action and good rhythm.	
3.3	Terminal strength	A static load of 500gf shall be applied to the tip of the terminal for 30 sec. in any direction.				Electrical characteristics shall be satisfied without damage or excessive looseness of terminals.	

# 喜威達企業股份有限公司

## SWEETA PRODUCTS CORPORATION

SERIES		SENSOR SWITCHES (SRM019)	Issuance date		20060801	
Document No.		DIC/PE019-001	Edition	C	Page	Page 3 of 3
Items		Test conditions			Criteria	
3.4	Operating force range	Apply a tension meter on the midpoint of the actuator (or tip of the shaft)to supply a pressure vertically from its free position to operating position			Refer to individual product drawing.	
3.5	Hand soldering	Use a soldering iron of 30 watts, controlled at 350-360°C approximately 3 seconds1time while applying solder.			A new uniform coating of solder shall cover a minimum of 90% of the surface being immersed. There shall be no defects in appearance or in the mechanical functions.	
3.6 Can't be passed through the wave soldering.						
4. Durability characteristic:						
4.1	Mechanical life	50,000 cycles Min of operation shall be performed continuously at a rate of 60 cycles.			After test: Contact resistance: 10Ω Max Operating force: 10gf. cm. Min The Encoder shall be free from abnormalities in appearance construction.	
	Electrical life	50,000 cycles Min of operation shall be performed continuously at a rate of 30 cycles per 0.1A 12VDC.				
5. Special Requirements						
5.1 Hazardous Substance Management: Follow environmental requirements: Hazardous Substance DIC/WI/G506.						
6. Packing explaintion						
6.1 250 PCS for one bag, 2 bags for one small carton,24 small cartons for one big box						
7.Quanlity records of delivered goods						
7.1 Package boxes or package bags should be attached labels or identifiers of Model No., Quantity and Quality Pursuing No.						
7.2 There shall be quality records of inspection and test in package boxes.						