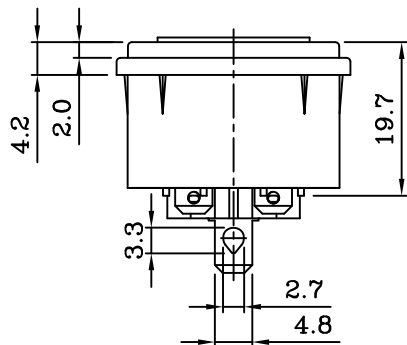


PANEL CUT-OUT



SPECIFICATION (SWITCH) :

1. CIRCUIT : DPST ON-OFF.
2. CONTACT RESISTANCE : 30MΩ Max.
3. INSULATION RESISTANCE : DC 500V 100MΩ Min.
4. WITHSTAND VOLTAGE : AC 1000V 1 Minute.
5. OPERATION FORCE : 800±300g.
6. ELECTRICAL LIFE : 10,000 Cycles At Full Load.
7. OPERATING TEMPERATURE RANGE : -25°C ~ +85°C.
8. SOLDERING : 280°C FOR 3 Sec.
9. DIELECTRIC STRENGTH: 2000V AC 1 Minute.
10. BODY MATERIAL : Black Glass-Fiber Thermoplastic. UL 94V-2~0.

SPECIFICATION:

1. INSULATION RESISTANCE: OVER 100MΩ 500V DC.
2. DIELECTRIC STRENGTH: 2000V AC ONE MINUTE.
3. Body Materil: Black Glass-Fiber Thermoplastic . UL 94V-2~0

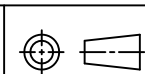
Rating:AC 10A 250V	
Mark	Safety Regulation
	CCC
	VDE
	ENEC
Rating:AC 15A 250V	
Mark	Safety Regulation
	cULus

DRAWING:C:DG\NEW-R\T\301SN\R-301SN(79).DWG

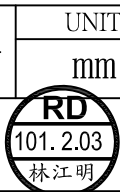
喜威達企業股份有限公司
SWEETA PRODUCTS CORPORATION

23552 新北市中和區中正路799號1樓
 Tel : 02-2226-8001 Fax : 02-2226-8002

http://www.sweeta.com.tw E-mail: sweeta.tw@msa.hinet.net



DRAWN BY



UNIT

mm

UNIT Q'TY

1

SCALE

1:1

APPROVED BY



TOLERANCE

X.XX±0.1
 XX.XX±0.2
 XXX.XX±0.3

ID NO

120203A02

DESCRIPTION

PRODUCT NO.

SWR-301SN(79)

INTERIM NO.

NEW NO.

REV

B