

SWEETA PRODUCTS CORPORATION

SPECIFICATION

TITLE AC POWER SOCKET	SPC. NO. SWHJC-022	PAGE : 1 OF 5 DATE : 2003.09.15
---------------------------------	------------------------------	--

SPECIFICATION

1. △Standard atmospheric condition :

Unless otherwise specified, the standard range of atmospheric conditions for making measurements and tests are as follows :

Ambient temperature : 15℃ to 35℃

Relative humidity : 45% to 85%

Air pressure : 86kPa to 106kPa

If there is any doubt about the results, measurements shall be made within the following limits :

Ambient temperature : 20 ±2℃

Relative humidity : 60% to 70%

Air pressure : 86kPa to 106kPa

Storage Temperature Range : -20℃ to 65℃

Operating Temperature Range : -10℃ to 55℃

Operating temperature range is the range of ambient temperature for the component that can be operated continuously at rated voltage and rated current.

2. Electrical characteristics:

	Item	Condition	Specifications
1	Rated voltage	Primary circuit.	AC 250V 7A
	Rated current	Secondary circuit.	DC 24V 1A (12V 2A)
2	Dielectric strength	Primary circuit: △AC 2000V for 1minute.	Without damage to parts, arcing or breakdown, etc.
		Secondary circuit: AC 250V for 1minute.	
3	Insulation resistance	A voltage of 500 V DC shall be applied for 1 minute. After which measurement shall be made.	100MΩ MIN.
4	Contact resistance	Measurement shall be made at 1000Hz with small current and voltage. (AC 100mA MAX. 2mV MAX.)	50mΩ MAX.

ISSUE	DATE	WRTN	CHKD	APVD	DESCRIPTIONS
	2003.09.15	陳樹民	龔雲輝	龔雲輝	
△x3	2007.12.20	李勇達	夏正雄	郭遠峰	修改 Solder ability 、Composite temperature humidity cyclic test
△x3	2010.09.21	江浩霆	劉秀慧	郭素玲	Modify item 2.2 。 Add item 7 、 8 。
△x1	2012.11.14	黃健瑋	郭素玲	郭遠峰	Modify the item 4.4.

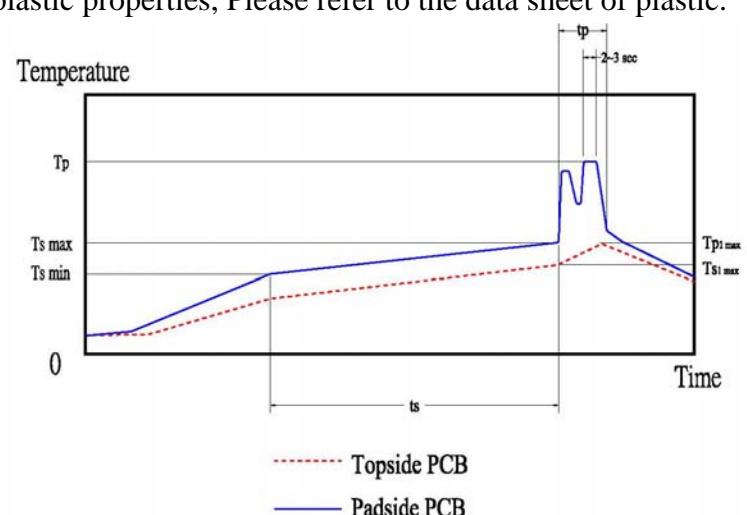
SWEETA PRODUCTS CORPORATION

SPECIFICATION

TITLE		SPC. NO.	PAGE : 2 OF 5
AC POWER SOCKET		SWHJC-022	DATE : 2003.09.15
3. Mechanical characteristics			
	Item	Condition	Specifications
1	Operating force	Insertion and withdrawal force shall be measured by using a gauge of standard dimensions.	4.9N~58.8N (0.5Kgf~6.0Kgf)
4. Endurance characteristics			
	Item	Condition	Specifications
1	Humidity test	The socket shall be stored at a temperature of $40^{\circ}\text{C} \pm 2^{\circ}\text{C}$ and a humidity of 90%~95% for 240 hours, and shall then be returned and allowed to remain at room condition for a period of 30 minutes, and blew off any water drops on the surface of the socket by air.	Electrical and mechanical characteristics shall be satisfied.
		Contact resistance	100m Ω MAX.
2	Operating endurance	The life test shall consist of 5000 times of insertion and withdrawal with the mate plug at a rate of 20 to 30 times per minute under no load. Testing plug with putting electric conducted grease to avoid overheating and friction.	Electrical and mechanical characteristics shall be satisfied.
		Contact resistance	100m Ω MAX.
3	Solderability	Temperature of solder : $\triangle 250^{\circ}\text{C} \pm 5^{\circ}\text{C}$ Time of dip : 3 ± 0.5 seconds Length of dip : $2 \pm 0.5\text{mm}$ (from top of terminal)	The soldered area shall be covered a minimum of 90% of the surface being immersed.

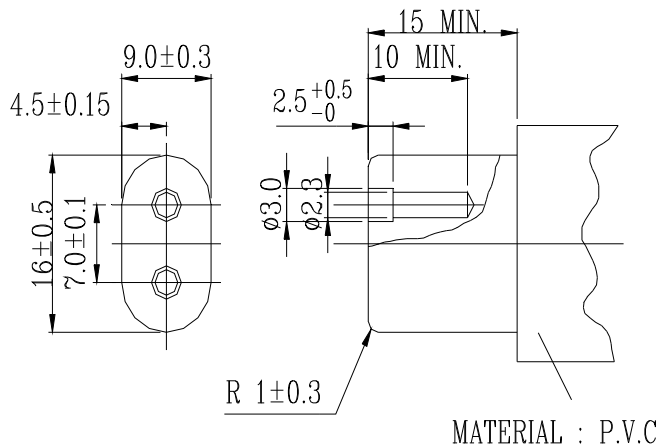
SWEETA PRODUCTS CORPORATION

SPECIFICATION

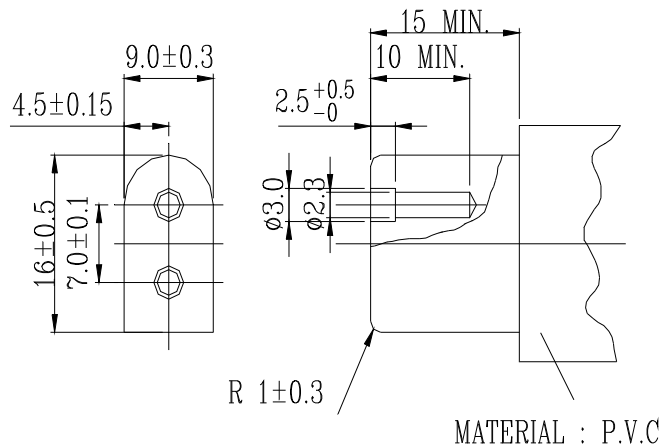
TITLE		SPC. NO.		PAGE : 3 OF 5	
AC POWER SOCKET		SWHJC-022		DATE : 2003.09.15	
	Item	Condition			Specifications
4	Resistance to Soldering Heat Test \triangle_1	Wave soldering Process			
		Profile Feature	Pb-Free Assembly		Electrical and mechanical characteristics shall be satisfied, and not show remarkable failure.
			Topside PCB	Padside PCB	
		Preheat -Temperature min -Temperature max -Time (ts min to max)	120℃ (Ts1 max)	110℃ (Ts min) 150℃ (Ts max) 75 sec	
		Peak/Classification Temperature	165℃ (Tp1)	260℃ ±5℃ (Tp)	
		Time within 5℃ of actual Temperature (tp)		10 sec (within 2 times every time 2-3 sec)	
		Time 25℃ to Peak temperature		3 minutes max	
		Wave Soldering Temperature Profile are as below			
		\triangle_3 About the plastic properties, Please refer to the data sheet of plastic.			
					
		Soldering Iron Test			Same as Wave soldering Process
		Temperature of soldering Iron : 380±10℃ Soldering time : 3±1 seconds			
	AC POWER JACK	Insertion force		4.9N～58.8N (0.5kgf～6.0kgf)	
		Withdrawal force			

TITLE AC POWER SOCKET	SPC. NO. SWHJC-022	PAGE : 4 OF 5 DATE : 2003.09.15
---------------------------------	------------------------------	--

5. Mating plug :



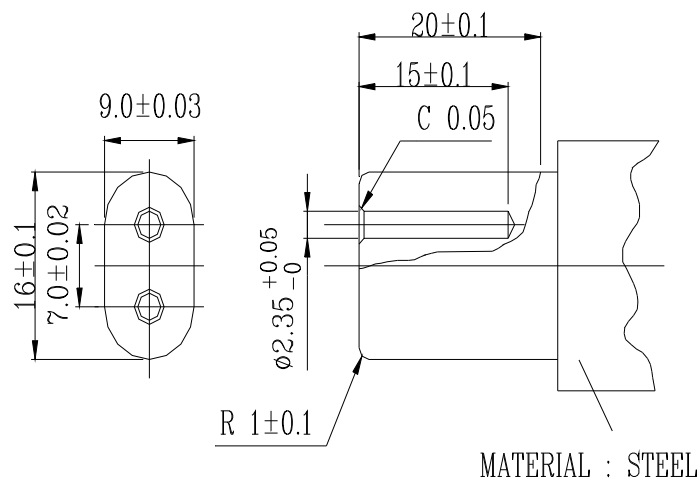
NO POLARIZED



POLARIZED

When above cord spec is inserted into or extracted from AC SOCKET, internal switching of AC SOCKET should be no problem.

6. Testing plug :



NO POLARIZED

△7. Soldering condition shelf life about 6 months depend on storage condition of humidity, temperature and others factors.

SWEETA PRODUCTS CORPORATION

SPECIFICATION

TITLE AC POWER SOCKET	SPC. NO. SWHJC-022	PAGE : 5 OF 5 DATE : 2003.09.15
---------------------------------	------------------------------	--

△8. Endurance test sequence

Test Item		Test group			
		A	B	C	D
2.2	Dielectric strength	1,6	1,6		1,6
2.3	Insulation resistance	2,7	2,7		2,7
2.4	Contact resistance	3	3		3,8
3.1	Operating force	4,8	4,8		4
4.1	Humidity test	5			
4.2	Operating endurance		5		
4.3	Solderability			1	
4.4	Resistance to Soldering Heat Test				5

Test sample quality : 2 pcs min. / group